



SENA[®]

SHIP MANAGEMENT S.A

M/V BALKIS

9113197

VESSEL PAMPHLET



25 Reda Street, ADAM bldg. 4th Floor, Ismailia-Egypt.
Tel: +201033050011 | +20643135910
Info@senashipping.com
www.senashipping.com



VESSEL NAME	: BALKIS
VESSEL TYPE	: GENERAL CARGO SHIP
FLAG	: ST. KITTS & NEVEIS
REGISTRION NO	: SKN 1003913
PORT OF REGISTRY	: BASSETERRE
CALL SIGN	: V4MA4
MMSI	: 341191000
IMO NUMBER	: 9113197
YEAR BUILT	: 1995
CLASS SOCIETY	: CAPITAL REGISTER OF SHIPPING
CLASS NOTATION	: CS 2 MULTIPURPOSE DRY CARGO SHIP CM
CLASS ID	: CR-00002
BUILDER	: MADENCI GEMI SANAYII LTD., TURKEY
OWNER	: ALBANYASIA LIVESTOCK SHIIPPING LINE CORP.
MANAGER	: SENA SHIP MANAGEMENT S.A.
P & I CLUB	: AMERICAN CLUB
H & M CLUB	: AL-BAHRIAH INSURANCE & REINSURANCE S.A.L

SHIP PARTICULARS:

LENGTH OVERALL (M).	: 99.40
LBP (M).	: 94.26
DEPTH MOULDED (M).	: 8.20
BREADTH MOULDED (M).	: 17.00
DRAFT MOULDED (SUMMER) (M)	: 6.70
AIR DRAFT (M)	: 30.37 @ BALLAST CONDITION
DEAD WEIGHT (TONS)	: 6,300
GROSS TONNAGE (TONS)	: 4,015
NET TONNAGE (TONS)	: 1974
SUEZ CANAL GROSS TONNAGE (TONS)	: 4132.69
SUEZ CANAL NET TONNAGE (TONS)	: 333.18
LIGHT WEIGHT (TONS)	: 2,201
DISPLACEMENT (TONS)	: 8,500

PROPULSION PARTICULARS:

MAIN ENGINE	: MAN B&W 7S35MC 4900 KW/6650 HP
AUX. ENGINE	: 2 X MN 380 KW , 120 KW E. Gen. & Shaft Gen.
BOW THRUSTER	: 500 KW/680 HP
SERVICE SPEED	: 16 Knots

CARGO HOLDS CAPACITY:

CONTAINER CAPACITY	: 472 TEU
MAXIMUM ALLOWABLE LOAD	: 10.00 T/m ² Tank Top, 2.60 T/m ² Hatch Top Plating
CARGO HOLD 1 DIMENSIONS	: 25.00 x 13.20 x 8.50
CARGO HOLD 2 DIMENSIONS	: 37.50 x 13.20 x 8.50
CAPACITY OF CARGO HOLD 1	: 2,810.4 CBM
CAPACITY OF CARGO HOLD 2	: 4,325.0 CBM
TOTAL CAPACITY	: 7,135.4 CBM

LIQUID CAPACITIES:

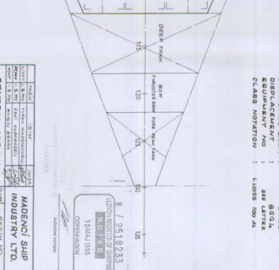
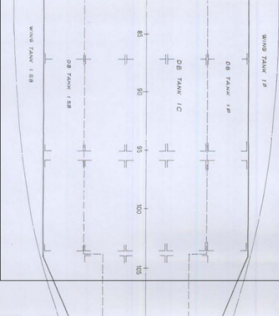
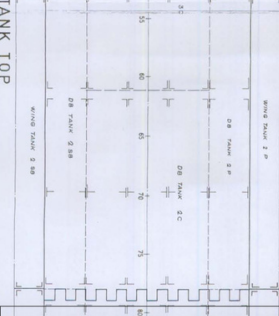
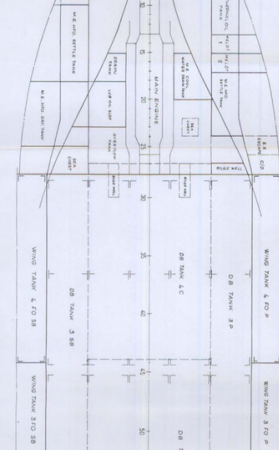
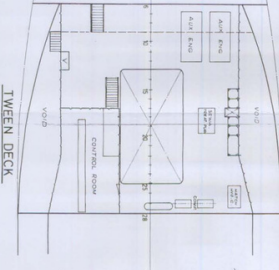
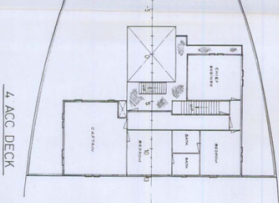
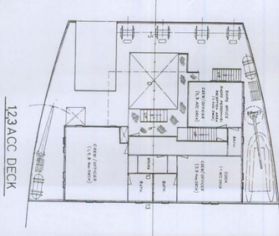
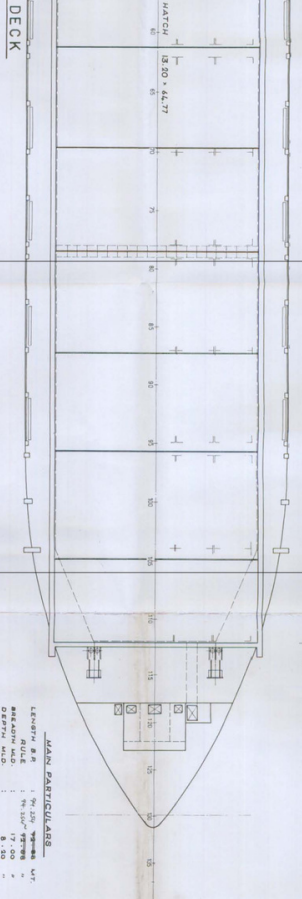
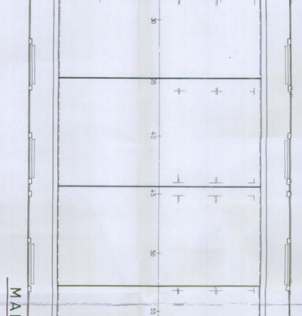
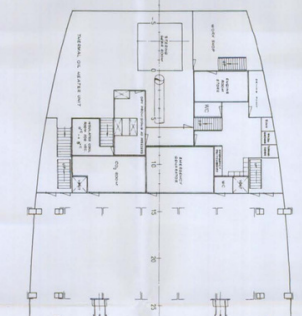
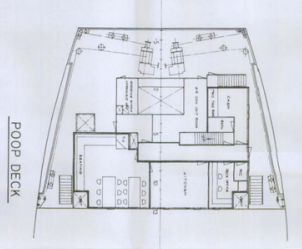
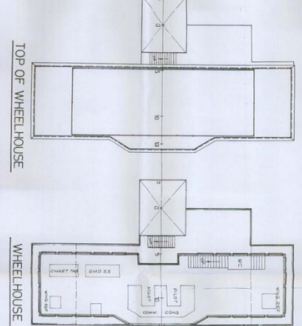
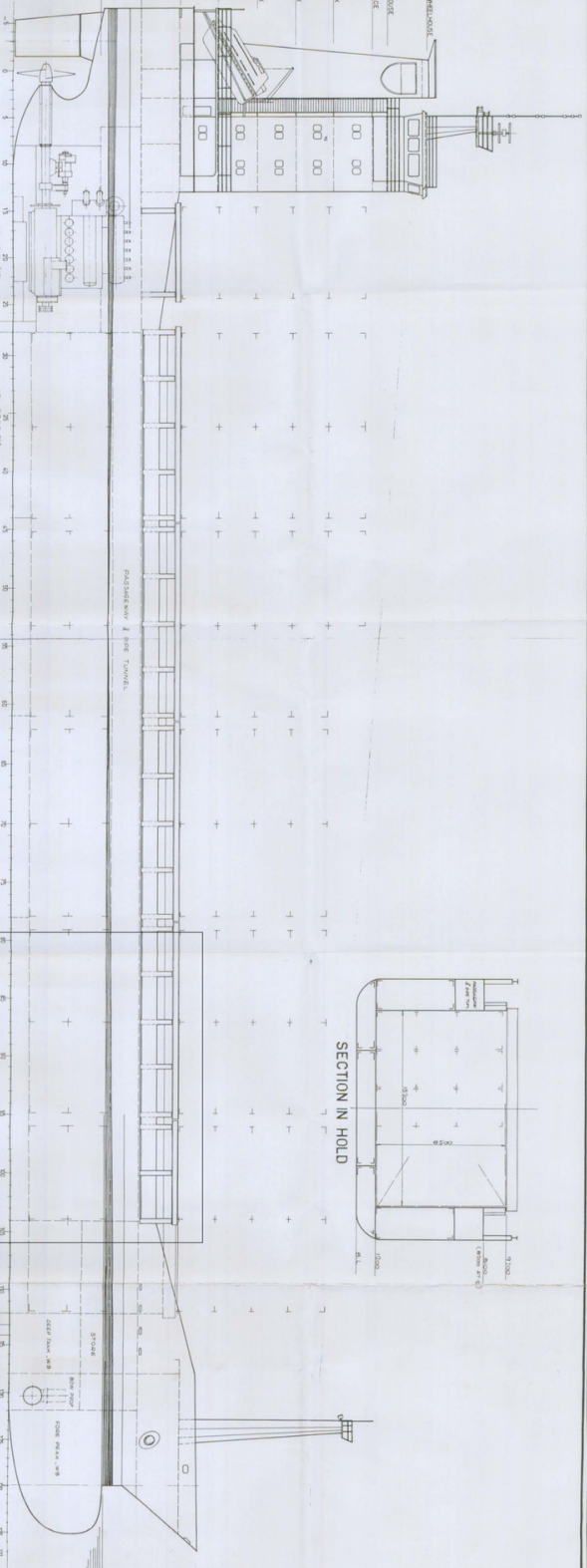
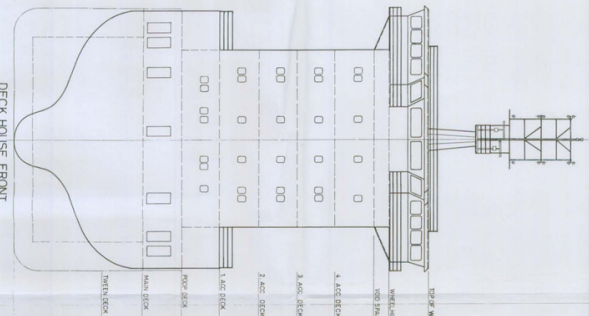
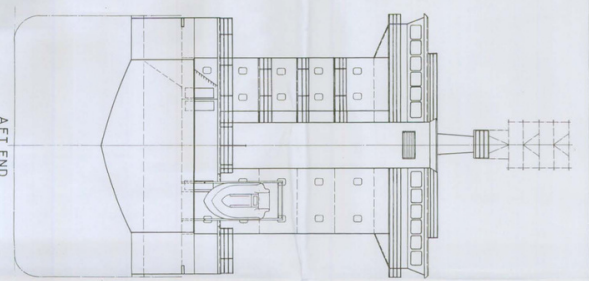
FUEL OIL CAPACITY	: 489.6 Tons @ 0.99 t/m ³
DIESEL OIL CAPACITY	: 68.10 Tons @ 0.85 t/m ³
FRESH WATER CAPACITY	: 59.00 Tons



M/V BALKIS

9113197

GENERAL ARRANGEMENT



MAIN PARTICULARS

LENGTH	85.20	MT
BREADTH	12.50	MT
DEPTH	7.50	MT
DEPTH AT BOW	8.50	MT
DEPTH AT STERN	8.50	MT
CLASS	COLLINS	MT

GENERAL ARRANGEMENTS
HULL NO. 008

DESIGNED BY: **ALFA LOMAS**
CONSTRUCTED BY: **ALFA LOMAS**

MANAGED BY: **ALFA LOMAS**
OPERATED BY: **ALFA LOMAS**

GENERAL ARRANGEMENTS
HULL NO. 008

DESIGNED BY: **ALFA LOMAS**
CONSTRUCTED BY: **ALFA LOMAS**

MANAGED BY: **ALFA LOMAS**
OPERATED BY: **ALFA LOMAS**